

# Wire Lab Company Pressure Die Holder Receptacles

Wire Lab Company manufactures a variety of Water-Cooled Receptacles specifically designed for adding WILCO Pressure Die Holders to your existing wire drawing machine. WILCO Pressure Die Holders use standard, off-the-shelf dies for easy size changes without having to order custom dies. The following are some of the more typical receptacles we stock. Custom receptacles made to your specifications are available upon request.



WILCO Pressure Die Holders are available in five (5) standard sizes including typical "R" series and a metric model for 43 x 27mm casings. The WILCO pressure die approach is based on the familiar double-die concept.



The pressure die is slightly larger in size that the incoming material allowing the rod or wire to enter the pressure die holder with a good coating of lubricant on the material surface. Lubricant is pulled into the holder and forced through the drawing die under high pressure.



Water-cooled receptacles are a quick means for installing WILCO Pressure Die Holders in your wire drawing machine with a minimal amount of die box modification. Water cooling aids in lubrication consistency especially with tougher to draw materials.



**Weld-On**

For a more permanent installation. Once the required bore is established this type is fitted on the box front and welded in place.



**Bolt-On**

No weld installation makes for easy installation when the die box has a flat front. Both the Bolt-on and Weld-on have our largest cooling cavity.



**Threaded Style**

Originally for Vaughn machines this type is the most compact in size. No weld installation as lock ring holds receptacle firmly in place.



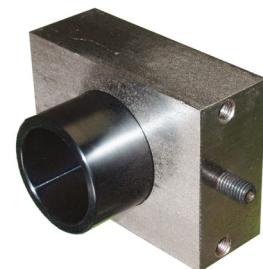
**Direct Cool Replacement**

One style that will replace single or double direct cooled dies. Housing maintains water tight seal using a single o-ring.



**Direct Cool Replacement**

Specifically designed to fit in a manufacturers direct cooled die box.



**Rectangular Receptacle**

Water cooled block is direct replacement for a standard, un-cooled single die blocks. Adds the benefits of a pressure die and water cooling immediately.